

Well Monitor - Multi-Phase Flowmeter

“From Wellhead to Desktop”



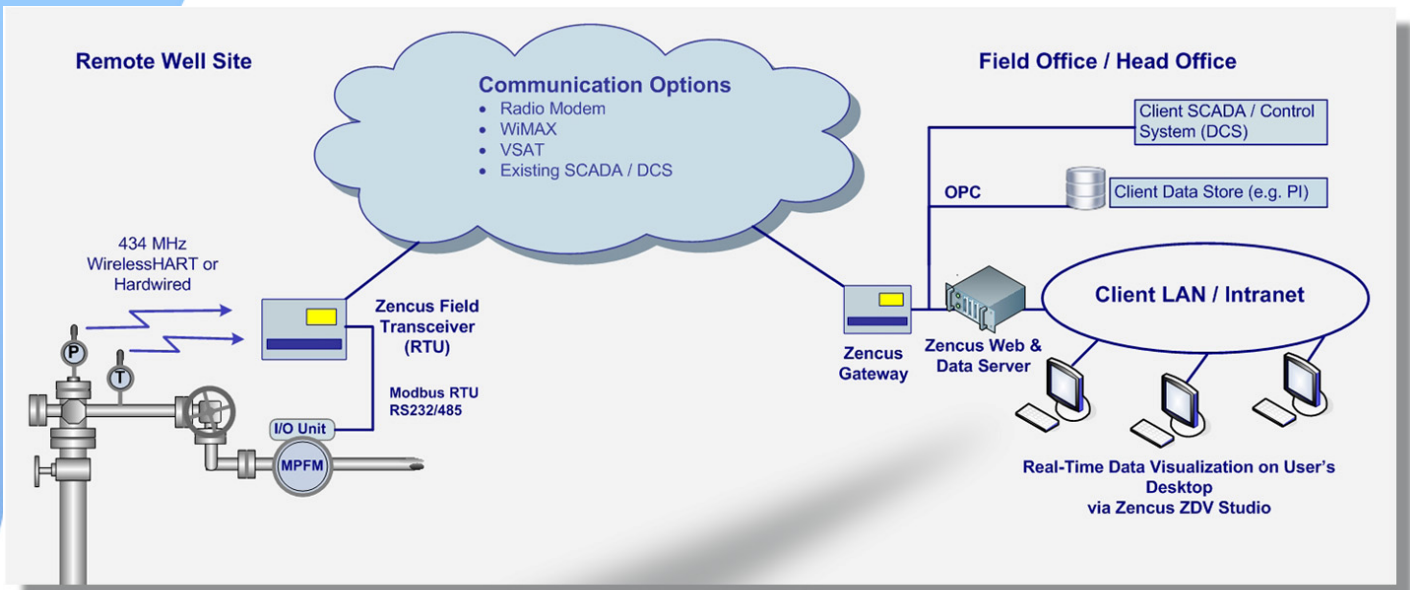
Features:

- Interfaces with most third-party multiphase flow meters.
- Remote web-based data delivery.
- Quick and easy to install.



Zencus Application Note Index

- Well Monitor – Production Well
- Well Monitor - Water Injection
- Well Monitor – ESP Well
- Well Monitor - Gas Lift Well
- Well Monitor – Well Integrity
- Well Monitor – Flow Rate Monitor
- Well Monitor – Multiphase Meter
- Well Monitor – Downhole Gauge
- Facility Monitor - CCTV & Site Security
- Facility Monitor - Hazardous Gases
- Facility Monitor – Cathodic Protection Systems
- Drilling Monitor – CCTV and Data Monitor
- Wireline - Operations Monitor



Zencus WebView
Wireless Data Acquisition

Home Help Support Log Out

Change Active Well: BRRI-95 HNIF

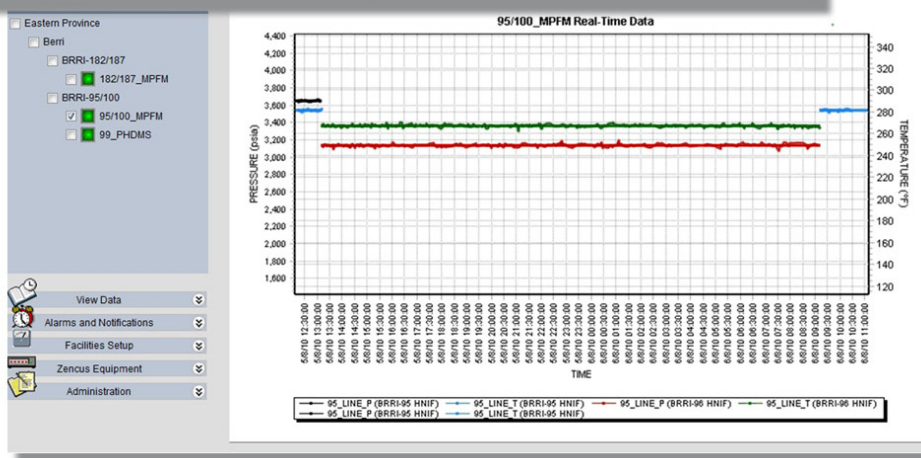
Active Well	BRRI-95 HNIF
MPFM System Alarm	OK
Venturi DP	95_DP_P: 1.2 psi
Line Pressure	95_LINE_P: 3,541.2 psia
Line Temperature	95_LINE_T: 281.6 °F
Volumetric Flow Rate Line Conditions - Oil	95_OIL_FLOW_LINE: 237,999 bbl/d
Volumetric Flow Rate Line Conditions - Water	95_H2O_FLOW_LINE: 0 bbl/d
Volumetric Flow Rate Line Conditions - Gas	95_GAS_FLOW_LINE: 42.7 Mcf/d
Volumetric Flow Rate Standard Line Conditions - Oil	95_OIL_FLOW_STD: 267,511 bbl/d
Volumetric Flow Rate Standard Line Conditions - Water	95_H2O_FLOW_STD: 0 bbl/d
Volumetric Flow Rate Standard Line Conditions - Gas	95_GAS_FLOW_STD: 966.5 Mcf/d
Water Liquid Ratio Line Conditions - WLR	95_WLR: 0 %
Gas Oil Ratio Standard Conditions - GOR	95_GOR: 94.2 scf/sbbl

Alarms:

- Power
- HART And ANALOG Modem
- HART Transmitter
- Analog Transmitter
- No Gamma Source Detected
- Gamma Detector Error
- System File (dafc.cnf)
- System File (scada.cnf)
- Com Port 1 Error
- Com Port 2 Error
- Com Port 3 Error
- Com Port 4 Error
- Communication Status

95/100_MPFM
Multi-phase Flowmeter

- Web-based software.
- Intuitive and easy to use.
- Real-time plotting, graphing and trending.
- Alarms and diagnostic messages by email and SMS text message.



“From Wellhead to Desktop”